

THOMAS MORE

University of
Applied
Sciences

WELCOME TO BELGIUM, WELCOME TO THOMAS MORE



MORE THAN
20.000
STUDENTS



250
RESEARCHERS



9
CENTRES OF
EXPERTISE



FACTS & FIGURES

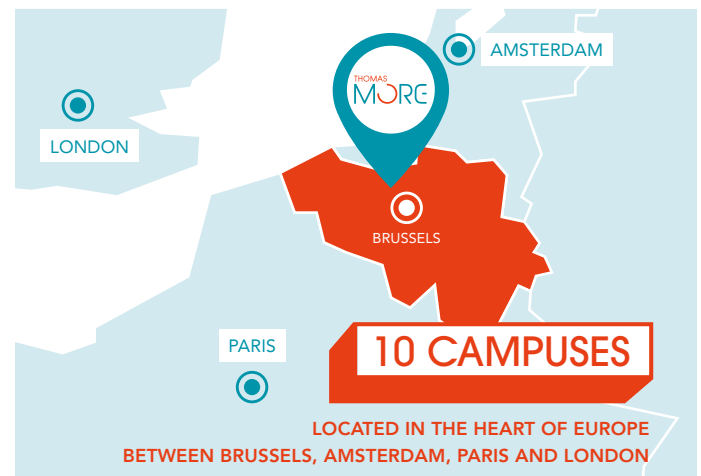
42
BACHELOR
PROGRAMMES

19
ASSOCIATE
DEGREES

40
ENGLISH-TAUGHT
EXCHANGE
PROGRAMMES

MORE THAN
1000
STUDENTS GOING
ABROAD FOR AT LEAST
ONE SEMESTER

12
ENGLISH-TAUGHT
BACHELOR DEGREES AND
3 POSTGRADUATES



THOMAS MORE

UNIVERSITY OF APPLIED SCIENCES



Thomas More is the largest university of applied sciences in Flanders, Belgium, with more than 20,000 students and a range of bachelor's degree, short bachelor's degree and postgraduate programmes taught in both English and Dutch.

The English-taught programmes attract students from more than 72 different nationalities, giving the campuses and programmes a vibrant international character. As a university of applied sciences, students get the best in hands-on education, working with international companies on projects and internships and learning from teachers who are experts in their field.

As part of the KU Leuven Association, Thomas More participates in a variety of research projects and upholds a high educational standard.

MEMBER OF

**ASSOCIATIE
KU LEUVEN**

8 FIELDS OF EXPERTISE



BUSINESS & TOURISM



EDUCATION



MEDIA & COMMUNICATION



SPORT



DESIGN & BUILD



LIFE SCIENCES & CHEMISTRY



PEOPLE & HEALTH



TECH & IT

ENGLISH DEGREE PROGRAMMES

We offer a range of **inspiring English-taught international degree programmes** giving (foreign) students with **high ambitions** access to our **top-quality education**; in addition to full (three-year) programmes, we organise abridged (one-year) courses to obtain a second degree.



MEDIA & COMMUNICATION

- 🏠 Bachelor of International Communication and Media
- 🏠 Bachelor of Information Management and Multimedia
- 🏠 Bachelor of International Journalism
- 🏠 Bachelor of International Media and Entertainment Business



BUSINESS & TOURISM

- 🏠 Bachelor of International Business Management
- 🏠 Bachelor of International Tourism and Leisure



PEOPLE & HEALTH

- 🏠 Bachelor of Orthopaedic Technology



TECH & IT

- 🏠 Bachelor of Applied Computer Science
- 🏠 Bachelor of Automotive Technology
- 🏠 Bachelor of Electronics-ICT
- 🏠 Bachelor of Information Management and Multimedia)



POSTGRADUATES

- 🏠 Postgraduate African Business Studies
- 🏠 Postgraduate International Teacher
- 🏠 Postgraduate Space and Service Design

YOUR DEGREE, YOUR CHOICE!

Choose from one of Thomas More's many competitive degree programmes, taught in English. Whether you're looking for a classic 3-year bachelor's degree or an abridged 1-year degree, we've got you covered!

- **Bachelor's degree:** full-degree programmes (6 semesters) consisting of thorough theoretical knowledge, practical application and preparation for a professional career.
- **Abridged bachelor's degree:** these short programmes allow you to obtain a second bachelor's degree in one year (2 semesters).
- **Postgraduate:** Graduated? Expand your knowledge and skills acquired in your bachelor's or master's degree. Earn a postgraduate in 2 semesters.

🌐 www.thomasmore.be/en/welcome



EXCHANGE PROGRAMMES

Discover more than 40 English-taught exchange programmes! We welcome exchange students from our partner universities around the globe to study or do an internship.

Thomas More promotes the 'spread your wings' model, by which every student acquires international-intercultural competences and sharpens their international professional knowledge through a succession of experiences to become a global citizen.



Thomas More is a comprehensive university that offers a wide range of disciplines. Each study programme has an extensive network of international partners both within and outside Europe.

Our lecturers and students are thus exposed to different views, knowledge, teaching and research methods as well as work practices.

Next to faculty-led international partnerships, Thomas More values partnerships at the institutional level, which boost **multidisciplinary in teaching**. Enhancing the scope and depth of learning, multidisciplinary brings forth many opportunities. Thomas More offers the **STAR-track multi-disciplinary semester in English** as an exchange programme open to students of various disciplines.

We invite our international partners to become part of the Thomas More international ecosystem and enjoy the benefits of our **inclusive and multidisciplinary community**.

Thomas More aligns the 'spread your wings' model with the partner's vision on internationalisation to find the best type of mobility that will **help achieve our common goals**.



INTERNATIONALISATION@HOME

- Buddies
- Co-learning with international students & staff
- COIL – Collaborative Online International Learning
- BIP – Blended Intensive Programmes
- Service-learning courses



SHORT-TERM MOBILITY

- Mobility up to a month
- BIP - Blended Intensive Programmes



CREDIT MOBILITY

- Few months/semester/year abroad
- Traineeship



DEGREE MOBILITY

- Double degree
- Joint degree
- Flow to a master abroad

RESEARCH

At Thomas More we conduct practice based scientific research. Every day, our **250 researchers** combine scientific expertise with practical knowledge and experience to provide **evidence-based** solutions and innovations for the largest and most urgent societal challenges. Our research is **multidisciplinary** by nature, combining knowledge from different domains and disciplines.



Creating **impact and innovation** for and with professionals and the wider society



Contributing to a worldwide **culture of knowledge**



Transfer of new knowledge to educational programmes, educating thousands of students each year to be state-of-the-art professionals



AREAS OF EXPERTISE

We conduct research in four multidisciplinary areas of expertise to address the challenges businesses, organisations, governments and society face, and to provide them with innovative solutions. Thomas More has nine centres of expertise, each of which focus on a specific field.

AREAS OF FOCUS AND RESEARCH TOPICS

CARING AND INCLUSIVE SOCIETY:

- E-health and e-care
- Assessment and screening
- Orthotics, prosthetics and exoskeletons
- Poverty and reference budgets
- International living lab research

SUSTAINABLE GROWTH:

- Algae and insects as sustainable raw materials
- Sustainable energy in buildings and greenhouse farming
- Sustainable design and manufacturing
- Future mobility

TECHNOLOGICAL AND DIGITAL INNOVATION:

- Digital storytelling
- Digital inclusion
- Extended reality
- Smart Industry

EFFECTIVE EDUCATION:

- Effective teaching
- Blended learning



CONTACT



DEGREE PROGRAMMES

Admissions: admissions@thomasmore.be

General Information: international.support@thomasmore.be

Programme Manager: annik.schellens@thomasmore.be

www.thomasmore.be/en/degrees

EXCHANGE PROGRAMMES

Head of International Office: inge.vervoort@thomasmore.be

www.thomasmore.be/en/exchange

RESEARCH

Research Managers:

joan.deboeck@thomasmore.be

marijke.lemal@thomasmore.be

SAVE THE DATE

 International Days | 13-17 March 2023